



## Great Wood Key Worker Child Care Information for Parents and Children (V) Guidance from July 3<sup>rd</sup> (from June 29<sup>th</sup> for Reception)

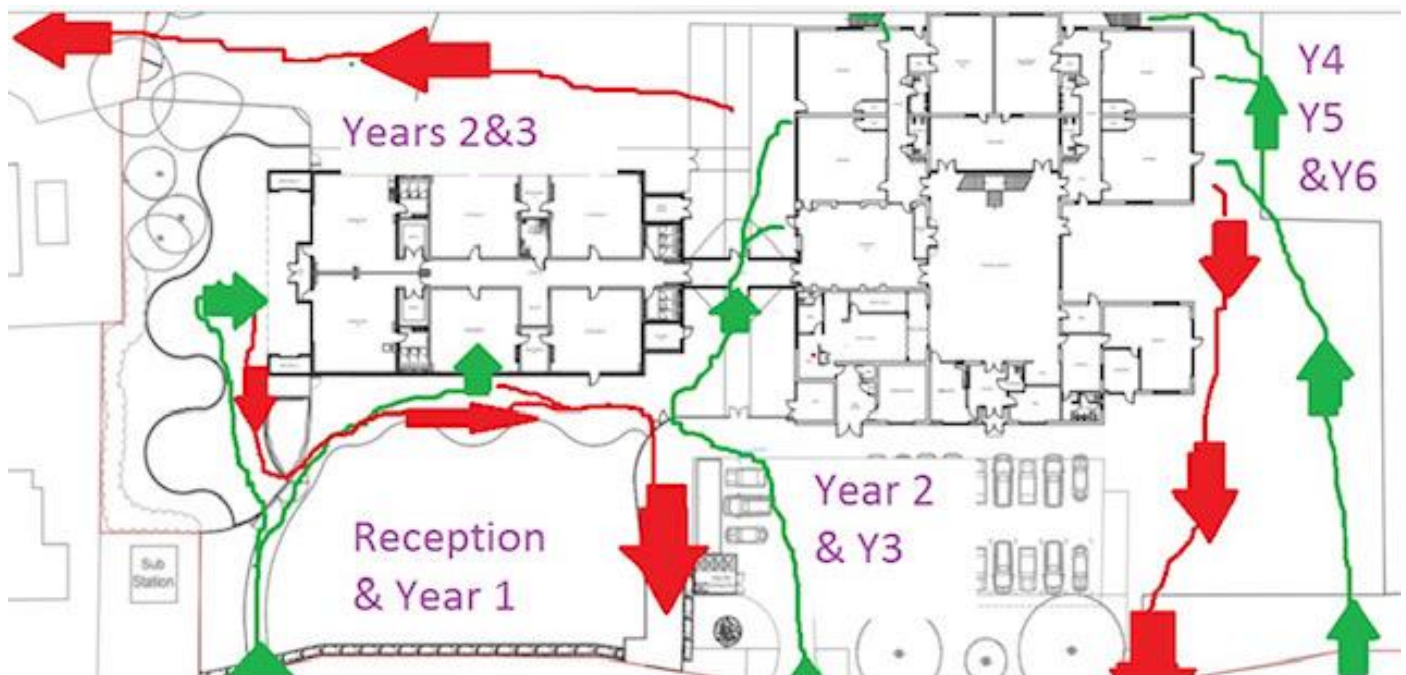
- School Uniform expected
- Class bubbles have staggered start and end times as the greatest risks is adult to adult contact
- New **one-way** systems for drop off and pick up - 3 entrances
- All children will have lessons in their own classroom
- Children need a packed lunch, healthy snack, water bottle and a pencil case with equipment.
- If sunny, remember a sun hat and to apply cream in the morning.

Reception and Year 1 enter next to the substation and exit at the main entrance.

Year 2 and Year 3 enter through the staff car park entrance and exit the rear field gate onto Huntley Close.

Year 4 and 5 enter the junior gate nearest Broadway and exit the junior playground walled gate.

The new one way systems may seem a bother at first but we must stick to it. Parents with siblings should clearly direct the older children to follow the one way system independently for drop off. For pick up, parents will need to allow more time for the process. To limit the number of adults around school if you wish your child to make their own way home at dismissal time, please inform us of this in writing. Please do not park on Huntley Close; planning permission was given for an occasional use gate only.



| Classes       | Acorn, 2S, 4H | 1R, 3HR, 5C | Chestnut, 2H, 4F | 1V, 3H, 5F |
|---------------|---------------|-------------|------------------|------------|
| Drop Off time | 8:45 am       | 8:50am      | 8:55 am          | 9:00am     |
| Pick Up Time  | 3:05pm        | 3:10pm      | 3:15pm           | 3:20pm     |

Designated areas for drop off/pick up – Family members **MUST** adhere to being distant from other families’ adults and children at all times.

| Year Group Bubble | Drop off/Pick up point   |
|-------------------|--|
| Reception/Year 1  | Reception classroom doors – wait to be called in one at a time or to pick up   |
| Years 2/3         | Enter through the link corridor and then wait distant from others to be called in one at a time – or to pick up.   |
| Years 4/5         | Parents to stay on the playground near Beaufort Road as usual. Y4 children to wait at a distance outside Y4 external doors ready to be called in. Y5 to wait in the football ‘cage’ distant from others until called in one at a time. At the end of the day children will be sent out one at a time to parents. |

### **The following are measures to ensure the safety of all in school.**

- ❖ Any child who is at all unwell should stay at home.
- ❖ If a child is at all unwell at school, they will be isolated and parents will be contacted to take them home
- ❖ Cleaning hands and wrists with soap and water and drying thoroughly is a frequent routine for all in school.
- ❖ The 'catch it, bin it, kill it' approach is promoted for coughs and sneezes.
- ❖ Frequently touched surfaces are cleaned often.
- ❖ We are minimising contact, and social distancing measures are being implemented.
- ❖ We operate in small group 'bubbles' and different bubbles do not mix.
- ❖ Toileting routines are regular to prevent more than one using the toilets at once.
- ❖ The sharing of equipment is discouraged- computers are allocated and wiped down between use.
- ❖ The school kitchen is closed. No assemblies and no visitors on premises.
- ❖ Parents are not allowed within the building, including the school office – contact via telephone and email.

### **Physical Distancing**

We are following all the DFE guidance and we are trying our very best to maintain physical distance between children, including children in EYFS and KS1. This is hard for children and hard to enforce but with good planning and constant reminders, the children who have attended child care so far have been able to adhere to the measures well. We operate a one way system for the corridors and children need to stick at activities once chosen and can't wander even at free choice time. The children go to the toilet and wash their hands one at a time and they work at a distance from each other. The children within each bubble share playtimes together, but will be expected to play at a distance. All of these measures have been introduced in a sensitive way. We have ensured that any social distancing reminders are given in a calm and positive manner to reduce children's levels of stress or anxiety.

Our Behaviour Policy now includes the following whilst minimising potential infections is a priority: Children who do not follow our rules will be given two warnings. If they continue to disobey the rules on social distancing and or hygiene routines, then the leadership team may ring parents and that pupil may be sent home.

### **Key Information**

- Wear school uniform- this should be clean on each day Please ensure you apply sun cream on your child in the morning and send them to child care with a sun hat to wear on warm, sunny days.
- Bring a packed lunch, healthy snacks and a water bottle. As usual, **no nut products**; we have a regular pupil with an allergy so no peanut butter sandwiches, please. Please disinfect water bottle/lunch box each day.
- Bring a pencil case with basic equipment for school – pencil, ruler, eraser, coloured pencils. School can provide these but welcomes children providing their own. The children will not allowed to share equipment.
- Names on everything, please.
- Guidance currently indicates that children do not need to wear face masks. However, we are happy for your child to wear a face covering in school if that is your wish.

### **IMPORTANT**

If your child returning for the first time, it is vitally important for you talk them through this information, particularly the changes to drop off and pick up. We believe that children are more likely to feel comfortable and less anxious if they have been informed about the expectations and any changes that have been made.